



GAT MONTHLY MEMBERSHIP PROGRESS REPORT

Results as of: 8/31/2022

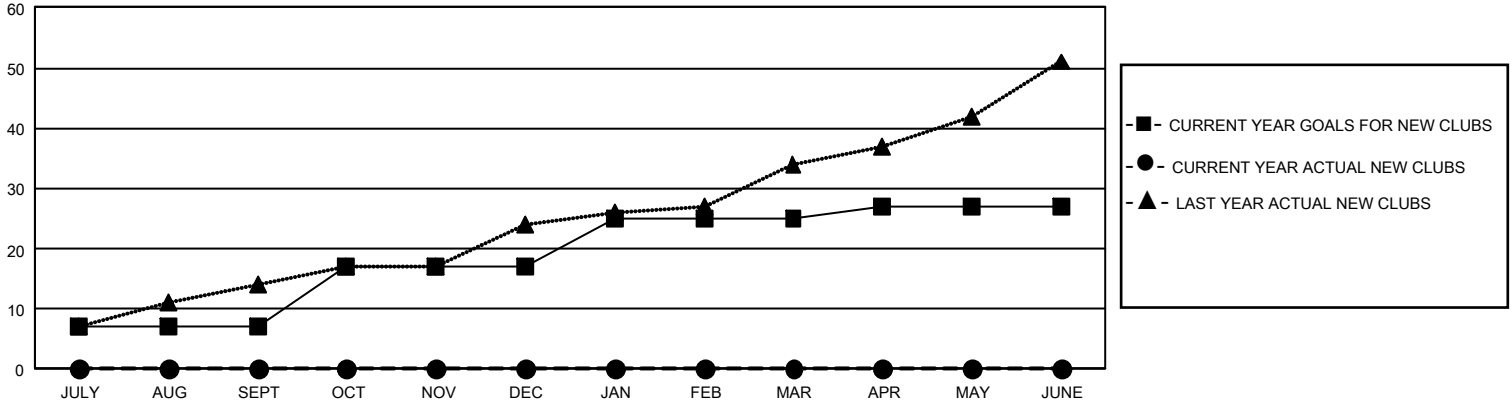
GMT Constitutional Area 8, Group A

REPORT DOES NOT INCLUDE CLUBS IN UNDISTRICTED AREAS.

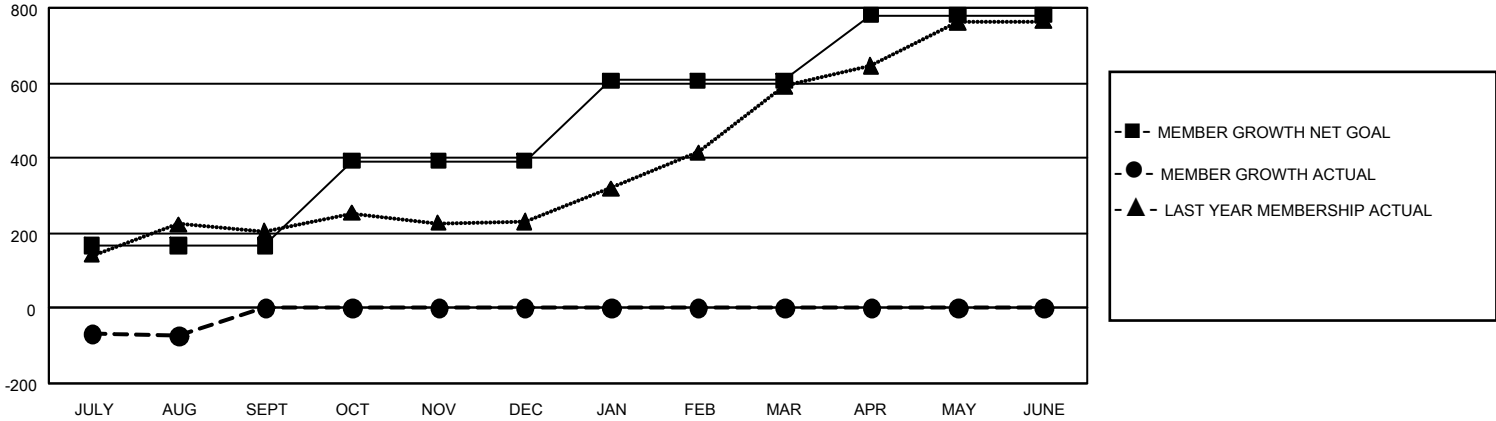
Clubs			
RESULTS FOR 2022-2023			
QUARTER	NEW CLUB GOAL	NEW CLUBS	DROPPED CLUBS
JULY/AUG/SEPT	21	0	2
OCT/NOV/DEC	30	0	0
JAN/FEB/MAR	24	0	0
APR/MAY/JUNE	6	0	0

Members			
RESULTS FOR 2022-2023			
QUARTER	MEMBER GROWTH NET GOAL	MEMBER GROWTH ACTUAL	DROPPED MEMBERS ACTUAL (including transfers)
JULY/AUG/SEPT	167	112	168
OCT/NOV/DEC	225	0	0
JAN/FEB/MAR	215	0	0
APR/MAY/JUNE	174	0	0

GOALS AND ACTUAL NEW CLUBS CUMULATIVE



GOALS AND ACTUAL MEMBERS CUMULATIVE



DROPPED CLUBS: 2	46 CLUBS OF 391 ADDED 1 OR MORE NEW MEMBERS	<u>GENDER DISTRIBUTION</u>	
		MALE 6,383 (69.91%)	FEMALE 2,745 (30.07%)
<u>DROPPED MEMBERS</u>		NON BINARY 0 (0.00%)	PREFER NOT TO ANSWER 2 (0.02%)
DECEASED 6	CLICK HERE FOR CUMULATIVE MEMBERSHIP DATA	TOTAL FAMILY UNIT MEMBERS 195	
CLUB CANCELLED 35		FAMILY MEMBERS PAYING HALF DUES 102	
OTHER 127			
TOTAL 168			